



— PRESS KIT —

# SIAM KEMPINSKI HOTEL BANGKOK

*Kempinski*  
HOTELIERS SINCE 1897

  
Siam  
Kempinski Hotel  
BANGKOK



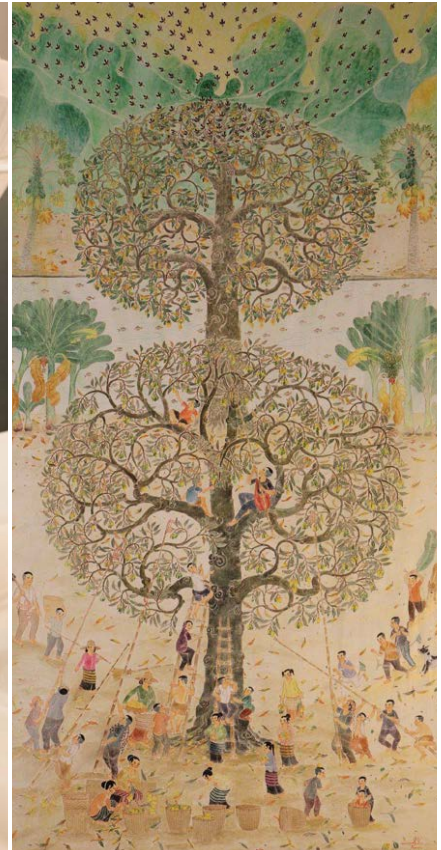
Kempinski Hotels, Europe's oldest luxury hotel group, opened its first property in Thailand's capital city of Bangkok on 27 September 2010. This five-star hotel combines Kempinski's trademark of European flair with the traditions of Thai hospitality.

The hotel sits elegantly on grounds that were part of the famous lotus pond palace (Sra Pathum Palace) commissioned by King Rama IV (made famous to Westerners by the story *The King and I*) as a retreat palace outside the city. This was once the home of Prince Mahidol, the father of His Majesty King Bhumibol Adulyadej The Great (King Rama IX) and the grandfather of Thailand's reigning monarch His Majesty King Maha Vajiralongkorn Phra Vajiraklaochaoyuhua (King Rama X). It is now the royal residence of Her Royal Highness Princess Maha Chakri Sirindhorn, the Princess Royal.

---

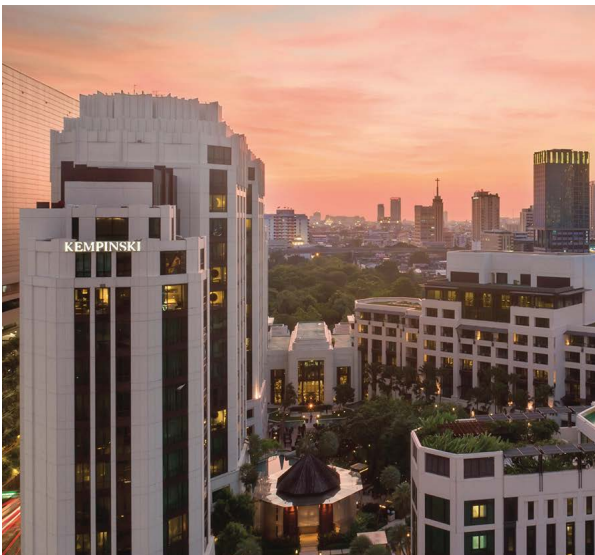
A resort-style city hotel offering 397 well-appointed guest rooms and suites including 22 rooms with direct pool access and 7 animal-themed family suites.

**[kempinski.com/bangkok](http://kempinski.com/bangkok)**



## DESIGN

Creating a peaceful sanctuary and recreating the historic palace gardens famous for their beauty and serenity, the property is built in a circle with lush landscaped tropical gardens and three saltwater pools at its centre. The lotus flower plays an important role in reflecting the area's history and can be found in the design depicted in every guestroom.



## LOCATION

Located at the heart of Bangkok's premier shopping and entertainment district, Siam Kempinski Hotel Bangkok is easily accessible by car and BTS Skytrain, the city's very convenient public transport rail network.

# ACCOMMODATION



---

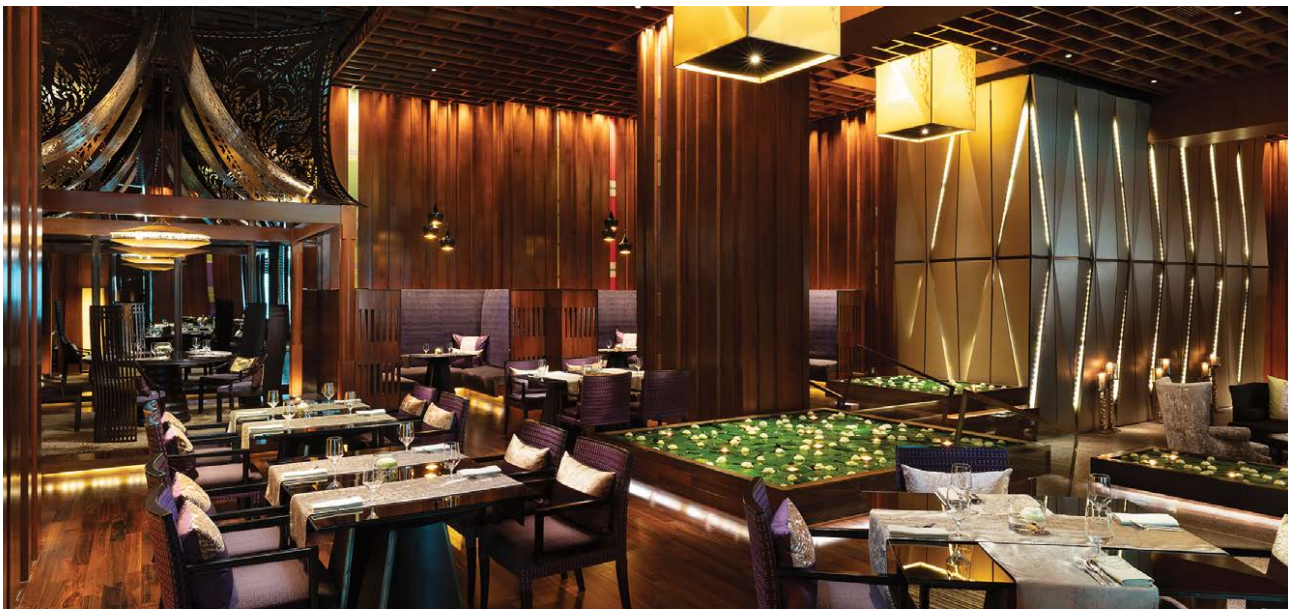
Siam Kempinski Hotel Bangkok offers 397 well-appointed rooms and suites. Most rooms feature breathtaking views of the hotel's lush garden. All rooms feature elegant and stylish contemporary décor with Thai elements through the paintings, decorative items, silk curtains and panelling. Every room offers modern comforts, high-tech entertainment systems and a sumptuous marble bathroom. Wi-Fi Internet and daily-replenished mini-bar are free of charge.

# DINING

**REFLECTING KEMPINSKI'S PHILOSOPHY OF HARMONISING EUROPEAN FLAIR AND LOCAL TRADITIONS, SIAM KEMPINSKI HOTEL BANGKOK OFFERS A VARIETY OF RESTAURANTS, AND ENSURING THAT NO CULINARY WISHES ARE LEFT UNFULFILLED .**

## — SRA BUA BY KIIN KIIN —

The popular fine dining, modern Thai cuisine restaurant was awarded a one star Michelin rating in the MICHELIN Guide Bangkok, Phra Nakhon Si Ayutthaya, Chiang Mai, Phuket & Phang-Nga 2022' for the fifth consecutive year. Sra Bua by Kiin Kiin was conceptualised by renowned chef Henrik Yde-Andersen, whose Kiin Kiin restaurant in Copenhagen, Denmark has enjoyed one Michelin star status since 2008 and was the first Thai fine dining restaurant in the world to receive this prestigious honour. Led by its Senior Head Chef, Chayawee Sutcharitchan, the restaurant invites guests to enjoy an extraordinary culinary performance as chefs choreograph different tastes of Thai ingredients from the original recipes in daring combinations. Embark upon an innovative culinary journey through the signature eight course set menu in an intimate dining atmosphere. Attentive beverage pairings, including wine and juices handpicked by Chef Henrik, are available on request. The restaurant offers a daily à la carte menu and business lunches.



# — ALATi —



A modern Mediterranean restaurant serving cuisine that reflects the diverse culinary traditions of the entire Mediterranean region. ALATi is designed to evoke memories of times spent travelling in countries that border the Mediterranean Sea. Diners will experience creative dishes with a combination of ingredients and flavours from a multitude of Mediterranean countries that tease each discerning palate and satisfy every appetite whether large or small. Alati is the Greek word for salt, a seasoning and preservative used for centuries by many different cultures and civilisations. Eating salt is a symbol of friendship in many regions and, at ALATi, friendship and good food is a perfect combination. ALATi combines high quality ingredients, open kitchen and a relaxed atmosphere in a casual, yet stylish setting serving lunch and dinner.

## — THE ADDITION —

The Addition offers a signature dining experience for breakfast that reflects Kempinski's harmonising philosophy of local traditions and European flair. Experience a cosy breakfast in a resort-style setting with an extensive à la carte and international buffet breakfast selection, featuring healthy choices, a classic made-to-order egg menu, gourmet signature menus, Asian delights, freshly baked bakery and pastries, and artisanal gourmet hot and cold beverages, as well as energy drinks to boost your day. Enjoy the tropical air al fresco at the garden bar. Scan the morning newspapers and watch the world go by.



## — ROTUNDA —



A resort-style pool bar nestling in the hotel's expansive landscape, overlooking the swimming pool, Rotunda Bar features light meals, poolside snacks and refreshing beverages. Guests can relax and enjoy a favourite cocktail or chilled beer under the shade of trees or lounge all day on comfortable sun beds while being pampered by the friendly staff.

## — 1897 LOUNGE —



The luxurious lounge named to commemorate Kempinski's founding year and located in the grandeur lobby is a sophisticated spot in town for a quick meeting, afternoon tea, aperitifs and digestifs. The extensive drinks menu features Champagne, fine wines and rare spirits, as well as creative cocktails.



## 1897 BAR

An elegant bar and cigar lounge in collaboration with La Casa del Habano located adjacent to 1897 Lounge. Guests can enjoy finest Cuban cigars and an inimitable collection of whisky, rum and cognac. The European-inspired luxury interior features high ceilings, deliciously comfortable seating, and an alfresco terrace to enjoy the heady frangipani-scented tropical evening air.



## EXECUTIVE LOUNGE



Exclusive to in-house guests staying on the Executive floors, the Executive Lounge offers a wide range of services and facilities. Services include personalised check-in and check-out, secretarial services, complimentary food and beverages, breakfast, lunch snacks, afternoon tea, evening light meals as well as selected alcoholic and non-alcoholic beverages. Meeting rooms and a private computer station are available.



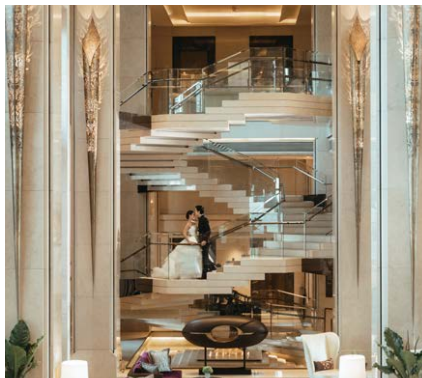
SIAM KEMPINSKI HOTEL BANGKOK

# FUNCTION ROOMS

**A VENUE FOR  
THE IMPORTANT MOMENTS IN LIFE**

Located in the prime location of downtown Bangkok, with spacious and elegant function rooms suitable for meetings, social gatherings and weddings, Siam Kempinski Hotel Bangkok is the perfect choice for every occasion.

---



# KEMPINSKI THE SPA



---

Embark on the ultimate spa journey inspired by the European cycle of the seasons: spring, summer, autumn and winter. The signature treatments include the Seasonal Massage, which can be personalised according to the individual's seasonal element. Each treatment is designed to help restore the body's natural equilibrium by drawing on the elemental wisdom of nature. Every therapist is committed to delivering the best pampering experience.

## A BRIEF HISTORY OF SIAM KEMPINSKI HOTEL BANGKOK

### *1920*

The property was inherited by Prince Mahidol of Songkhla, grandfather of the present King, who had Sra Pathum Palace (Lotus Pond Palace) built in 1920. On 10 September of the same year, the royal wedding ceremony of HRH Prince Mahidol of Songkla and HRH Sri Nagarindra, took place at this palace.

### *1950*

A second auspicious event to take place at the palace was the royal wedding ceremony of His Majesty King Bhumibol Adulyadej The Great (King Rama IX) and Her Majesty Queen Sirikit, consort of King Rama IX, on Friday 28 April 1950. They also signed their names on the marriage certificate at PhraTamnakYai, Sra Pathum Palace.

### *1964*

Of the 43 acres of Sra Pathum Palace, 26 acres of the palace land were leased to build the first privately run International hotel, which was the former Siam Intercontinental Hotel. One side of the palace shares a wall with the hotel. On 11 December 1964, HRH the Late Princess Mother unveiled the foundation stone of the hotel. At that time, the Siam Intercontinental was a local landmark.

### *2000*

The Siam Intercontinental Hotel's 30-year lease expired in the year 2000. The property was demolished to give way to the impressive Siam Paragon shopping mall and Siam Kempinski Hotel Bangkok.

### *2002*

Given the several layers of historical background of the palace and the demolition of the iconic Siam Intercontinental Hotel, the concept of Siam Kempinski Hotel Bangkok was to create an exclusive luxury urban oasis that blended architecture, landscaping and artwork into a single coherent entity with a lush tropical garden.

### *2010 - Present*

Siam Kempinski Hotel Bangkok opened its doors to the public on 27 September 2010. Sra Pathum Palace is currently the royal residence of HRH Princess Maha Chakri Sirindhorn, the Princess Royal.

# — PRESS CONTACTS —

## **LALIDAPUN CHAVANANAND**

Director of Public Relations

email: [lalidapun.chavananand@kempinski.com](mailto:lalidapun.chavananand@kempinski.com)

---

## **KULLAKITTI CHAROENMUANG**

Assistant Public Relations Manager

email: [kullakiti.charoenmuang@kempinski.com](mailto:kullakiti.charoenmuang@kempinski.com)

## **SIAM KEMPINSKI HOTEL BANGKOK**

991/9 Rama I Road Pathumwan • Bangkok 10330 • Thailand

Tel +66 2 162 9000 • Fax +66 2 162 9301

[kempinski.com/bangkok](http://kempinski.com/bangkok)

# — SOCIAL MEDIA —

INSTAGRAM



@SiamKempinskiHotelBangkok



FACEBOOK

@SiamKempinskiHotelBangkok

**SIAM KEMPINSKI HOTEL BANGKOK**

991/9 Rama I Road, Pathumwan

Bangkok 10330

Thailand

T +66 (0)2 162 9000

[reservations.siambangkok@kempinski.com](mailto:reservations.siambangkok@kempinski.com)

[kempinski.com/bangkok](https://kempinski.com/bangkok)

GPS DMS: 13°44'54"N, 100°32'05"E

GPS DD: 13.7484, 100.5348